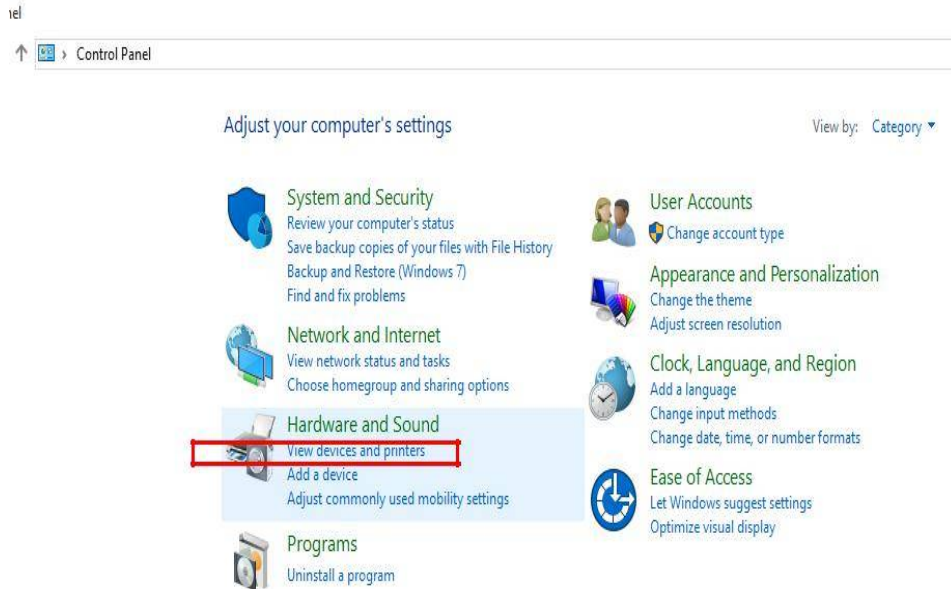
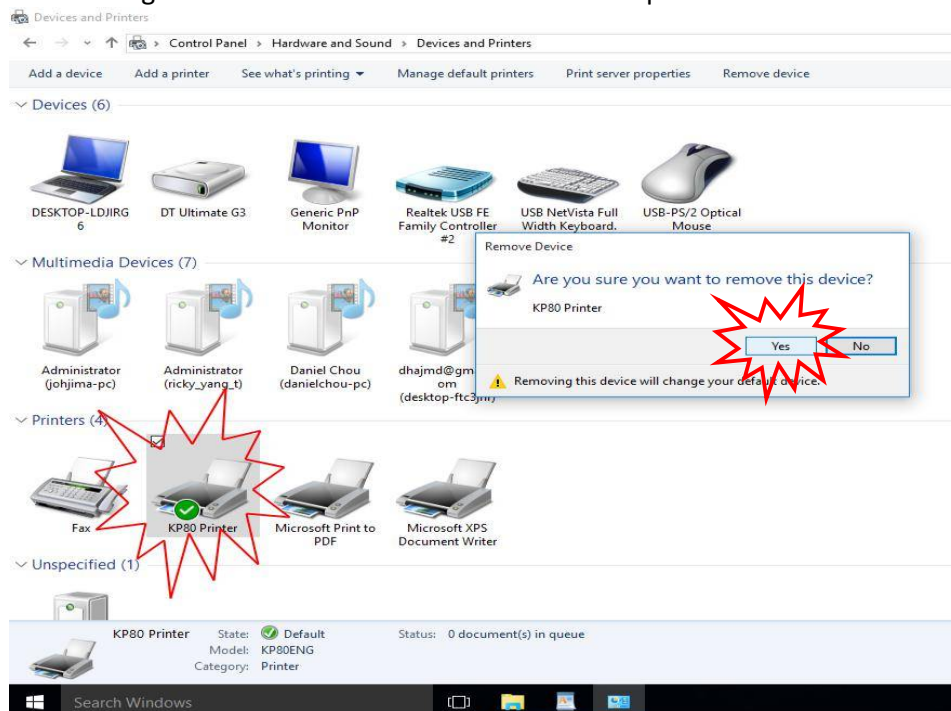


## 1. Remove the old thermal printer driver for version 2.0

### 1-1. Control Panel -> Hardware and Sound -> Devices and Printers

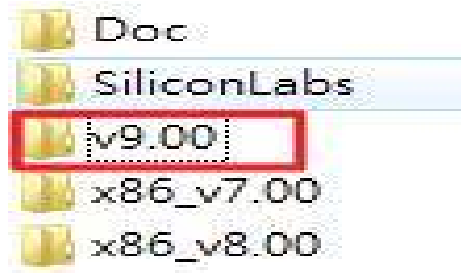


### 1-2. Press the right button of the mouse to remove KP80 printer

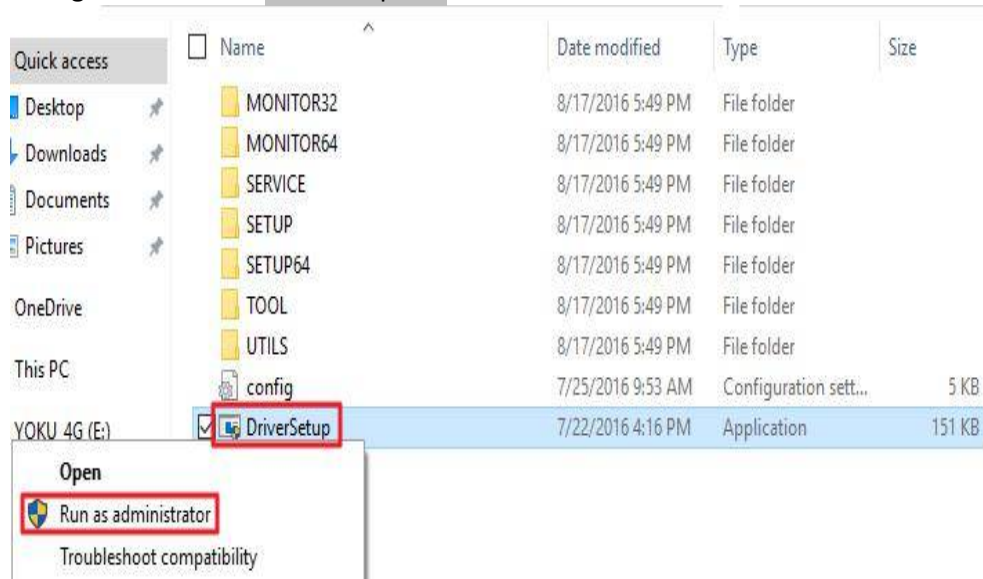


## 2. Install the new thermal Printer driver version 9.00:

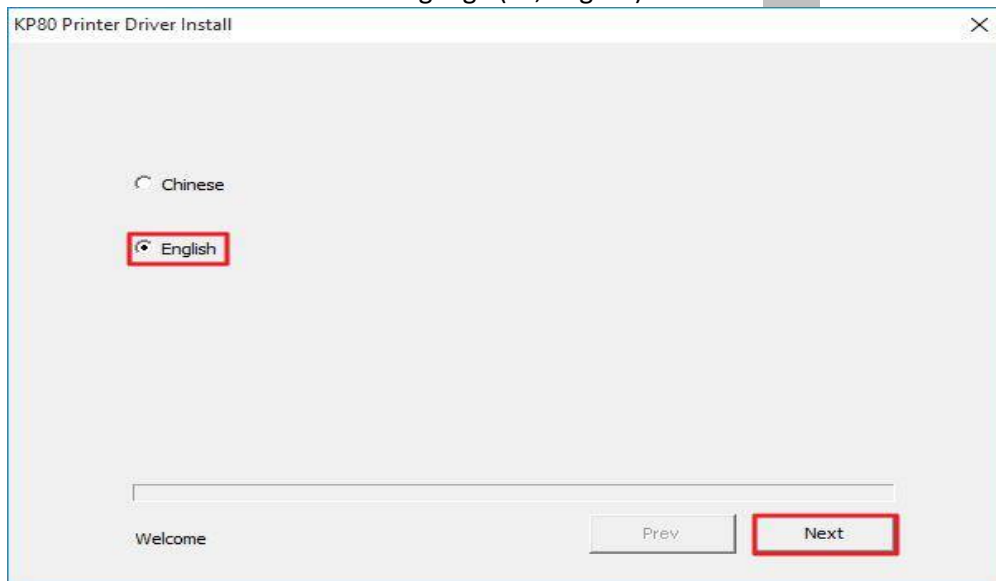
2-1. Find out the “v9.00” and enter into this folder.



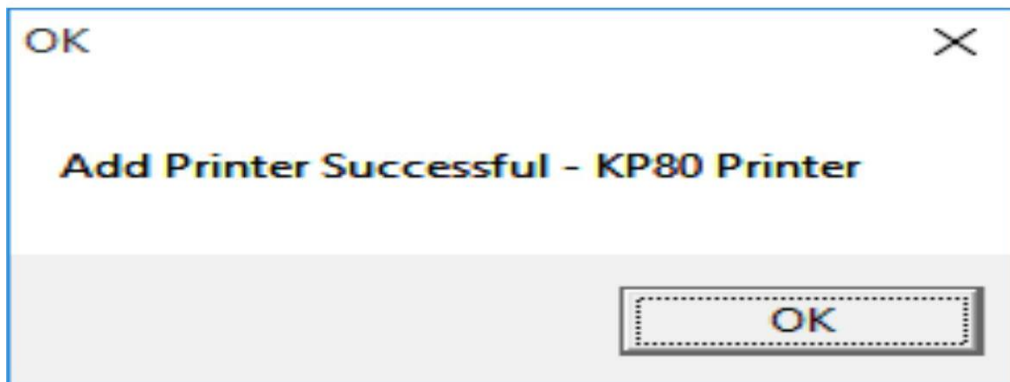
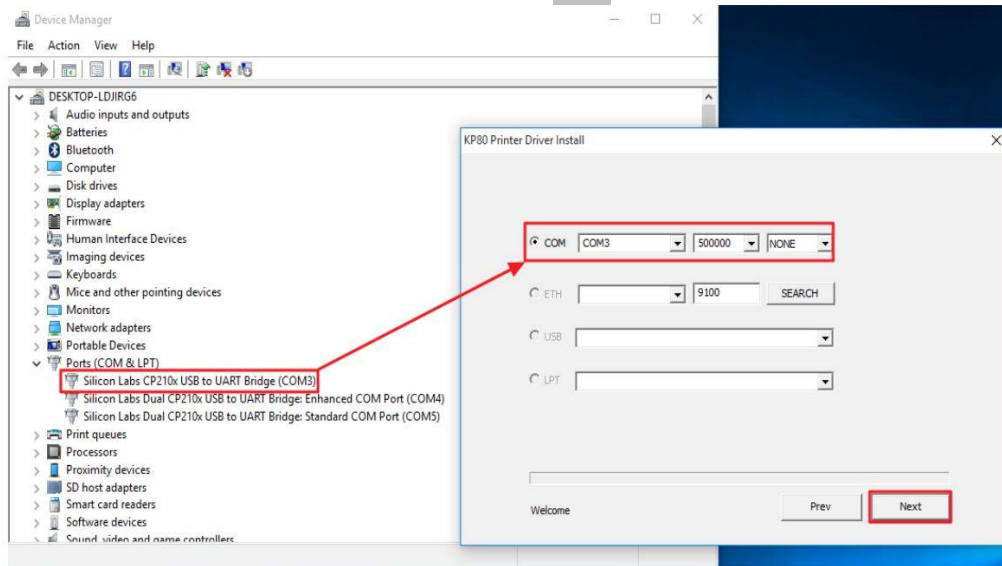
2-2. Right-click on the KP80Setup.exe and click **Run as administrator**.



2-3. Please click driver installer language (ex, English) and click **Next** button.



2-4. Please select correct COM Port and click **Next** button.



2-5. After the driver has been installed, a KP80 printer icon appears again.

